

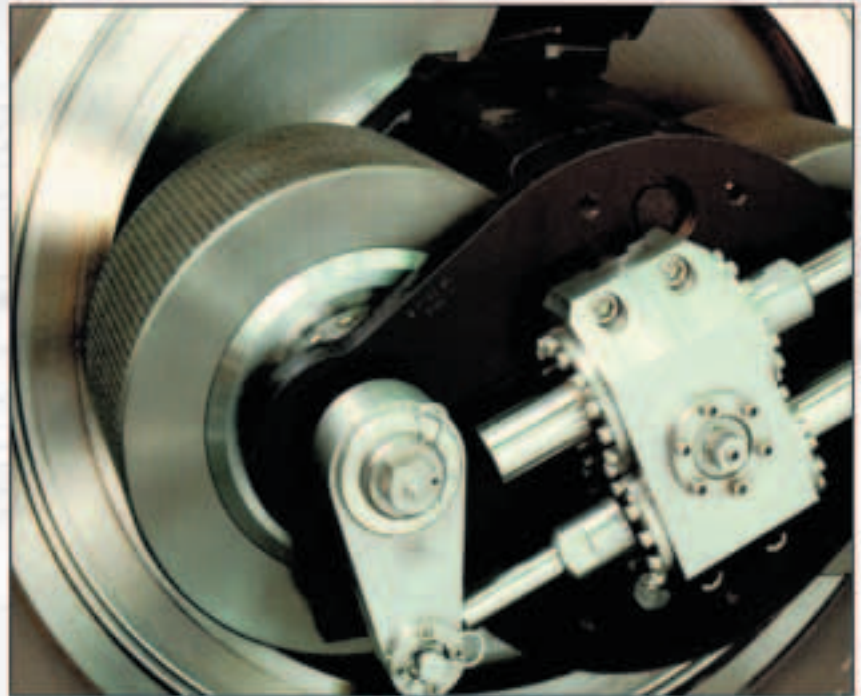
CPM LINEATOR



**CALIFORNIA
PELLET MILL**

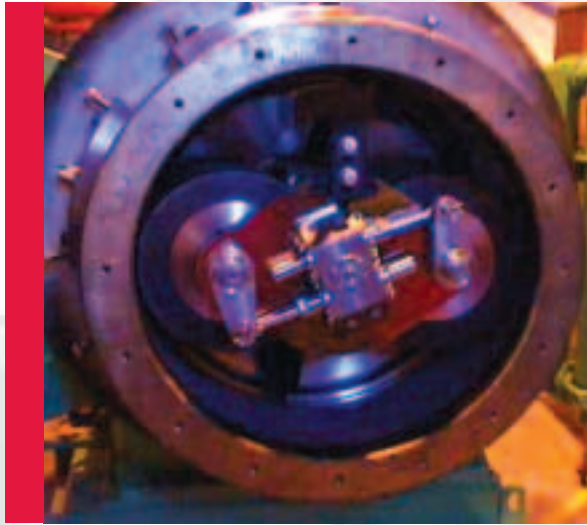
Your Partner in Productivity

The CPM Lineator has lifted pelleting technology to another level. The Lineator makes it possible to remotely control the distance between roller and die surface while the pellet mill is in operation. The compact and reliable design of the CPM Lineator provides swift, accurate and safe roller adjustment during the pelleting process.



**REMOTE ROLL
ADJUSTMENT**

CPM LINEATOR



FEATURES

- Clean, compact stainless steel design, fits neatly in die cavity
- Pneumatic gear motor drive operates on 90 PSI
- No lubricating oils for added feed safety
- Roll adjustment via external control panel or Beta Raven pelleting software
- Control panel with LED screen and counter for repeatable roll gap settings
- During roll change, rolls are set independently, then one button adjusts rolls simultaneously

BENEFITS

- **Save money and time**
 - Lower electrical demand starting pellet mill
 - Ability to move rolls to preset position after pellet mill motor ramps up
 - Reduce costly productions stops
 - Fast return to production following die change or upset condition
- **Safety**
 - Roll adjustment without having to open the pellet chamber
- **Increased die life**
 - Reduced die/roll wear and cost per ton – minimizes or prevents metal-to-metal contact
 - Key or password protected to prevent unauthorized personnel from changing minimum die/roll clearance
- **Simple maintenance**
 - Quick disassembly and assembly during roller changes
- **Easy retrofit**
 - Available for installation on most existing CPM pellet mills



CPM: A World Wide Company with Local Representatives for Sales, Service and Support

California Pellet Mill
1114 E. Wabash Ave.
Crawfordsville, IN 47933
(800) 428-0846

Roskamp Champion
2975 Airline Circle
Waterloo, IA 50703
(800) 366-2563

Beta Raven
40 S. Corporate Hills,
Ste. 102
St. Charles, MO 63301
(800) 552-2382

Century Extrusion
2412 Aero Park Court
Traverse City, MI 49686
(231) 947-6400

Wolverine Proctor
251 Gibraltar Road
Horsham, PA 19044
(215) 443-5200

Crown Iron Works
2500 West County Road C
Roseville, MN 55113
(651) 639-8900